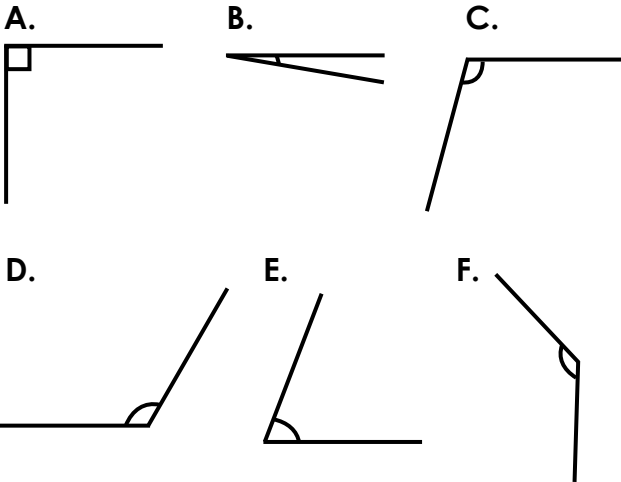


Identify Angles

1. Circle all the obtuse angles.

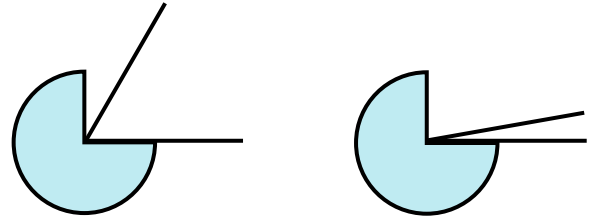


VF

4. Sarah says,



Only angles less than 80 degrees are acute.



Is she correct? Prove it.

R

2. Draw an acute angle using the line below.



VF

5. Combine different angles below to create acute angles.

33°

50°

69°

11°

72°

24°

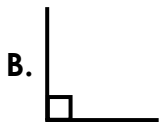
Find three possibilities.

PS

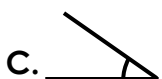
3. Match the angles to the correct label.



Acute angle



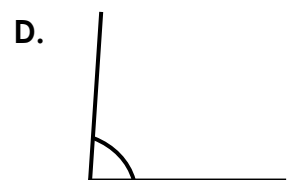
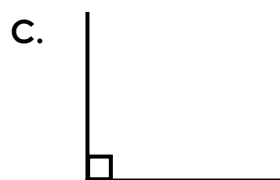
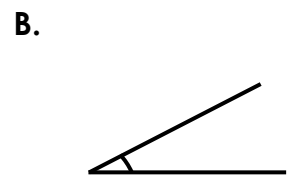
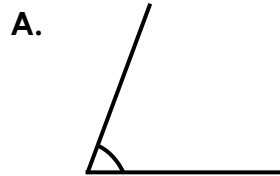
Obtuse angle



Right angle

VF

6. Which angle is the odd one out?



Explain your answer.

R

Identify Angles

1. C, D and F
2. Accept any angle that is less than 90 degrees.
3. A. Obtuse angle; B. Right angle; C. Acute angle
4. Sarah is incorrect because any angle less than 90 degrees is acute. Angles between 81 and 89 degrees are also acute.
5. Various answers, for example: 33° and 50° ; 24° and 11° ; 69° and 11°
6. C is the odd one out because it is a right angle. A, B and C are all acute angles.