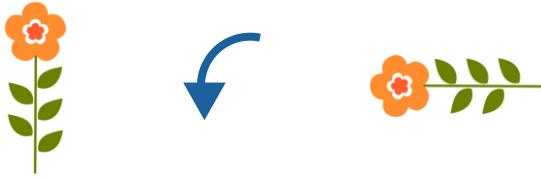


Turns and Angles

1. Circle the turn that the flower has made from its starting position.



whole turn
anti-clockwise

quarter turn
clockwise

half turn
clockwise

quarter turn
anti-clockwise

VF

2. Describe how the shape has moved and in which direction.



This shape has made a _____
turn _____.

VF

3. Complete the table below by drawing the shape's new position.

Starting shape for
each instruction:



| Half turn anti-clockwise | Three-quarter turn clockwise |
|-----------------------------|---------------------------------|
| | |

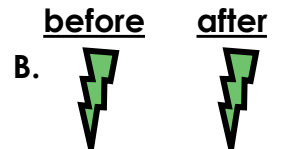
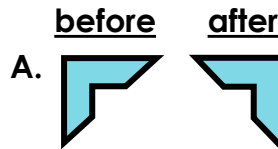
VF

4. Match each child to their shape.



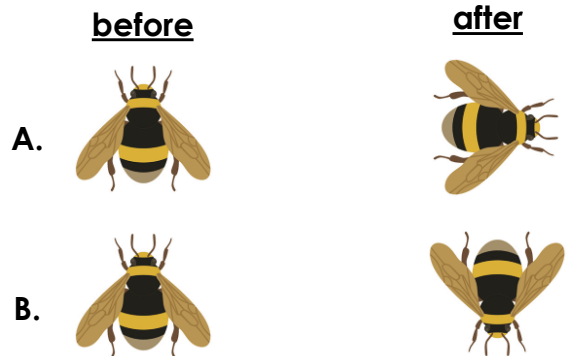
My shape made a three-
quarter turn clockwise.

My shape made a whole
turn anti-clockwise.



PS

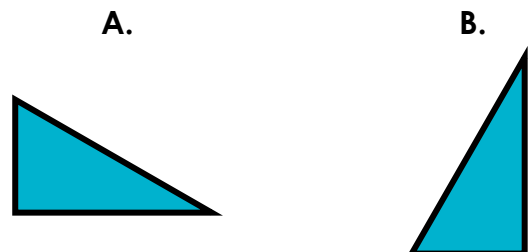
5. Two bees start in the same position. They want to turn the same amount in the same direction.



What mistake have they made? Explain.

R



6. How many different ways could shape A have turned to get to the position of shape B?



PS

Turns and Angles

1. quarter turn anti-clockwise
2. The shape has made a quarter turn clockwise.
- 3.

| Half turn anti-clockwise | Three-quarter turn clockwise |
|---|---|
|  |  |

4. Sui-Lin: C; Jakub: B
5. The bee labelled A has made a quarter turn clockwise and the bee labelled B has made a half turn, either clockwise or anti-clockwise.
6. 2 ways: a quarter turn anti-clockwise or a three quarter turn clockwise.