

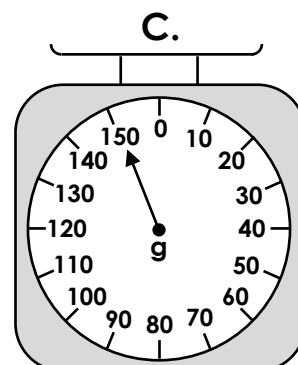
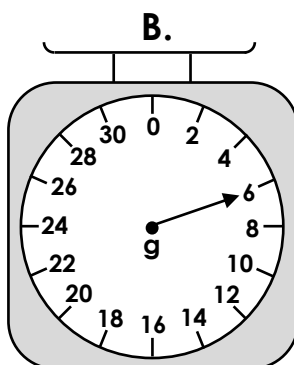
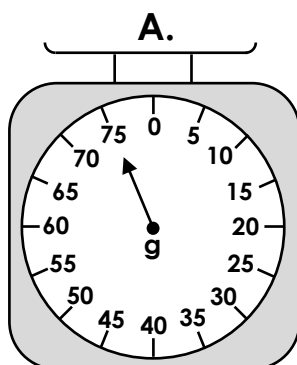
# Measure Mass in Grams

1. Match each item to the correct scale.

raspberry  6g

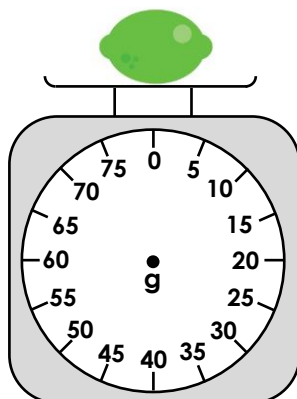
potato  150g

apple  75g

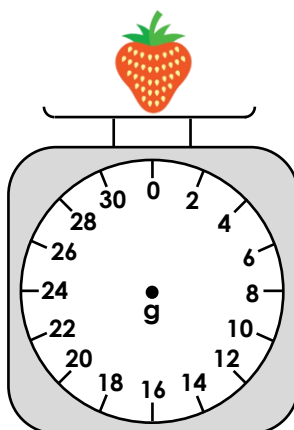


2. Draw the pointer in the correct position on the weighing scales.

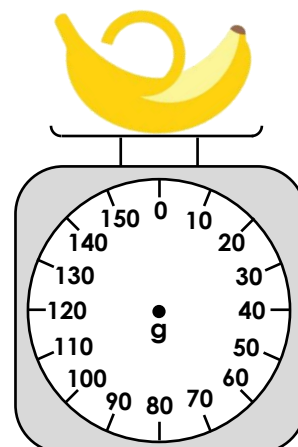
75g



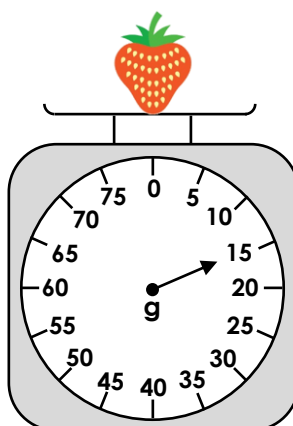
12g



140g



3. The pear weighs twice as much as the strawberry. Charlie has some 2g, 5g and 10g weights. Which weights could he use to balance the scales? Find 3 possible answers.



2g

5g

10g