

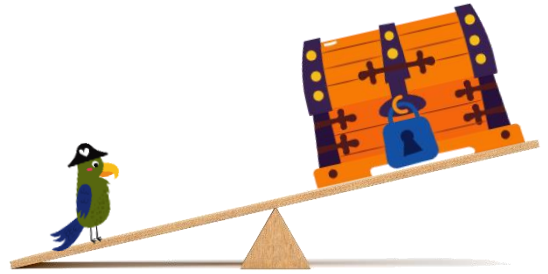
# Compare Mass

1. Circle the object which belongs on the balance scales.



VF

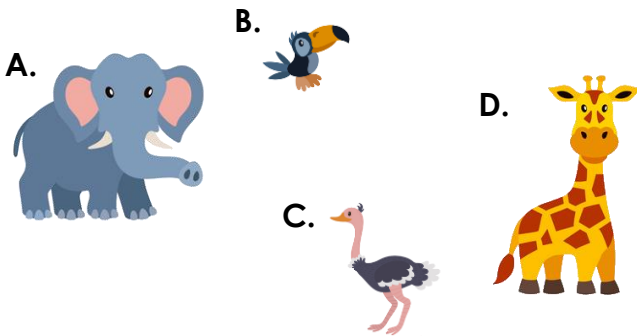
4. Kyle has placed the objects on the balance scale.



Is he correct? Explain why.

R

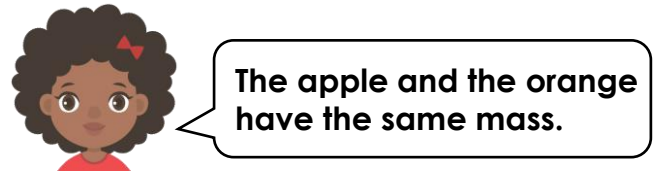
2. Order these animals from heaviest to lightest.



--	--	--	--

VF

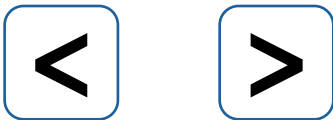
5. Hattie looks at the fruit on the scales. She says,



Is she correct? Explain your answer.

R

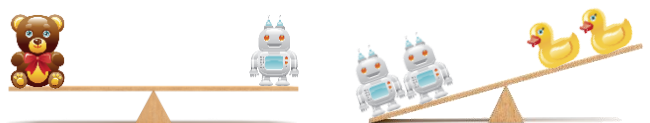
3. Which symbol could you swap for the underlined words?



- A. A grape is lighter than a plum.
- B. A pineapple is heavier than a banana.

VF

6. Look at the scales below.



Use one toy from each scale above to make the scale below correct.

Which toy can replace each letter?



PS

## Compare Mass

1. C
2. A, D, C, B
3. A. <; B. >
4. Kyle is incorrect. He has placed the objects the wrong way around. A treasure chest would be heavier than a parrot. So the chest must be on the down side of the balance scale.
5. Hattie is correct, the pear and orange have the same mass, and the pear and apple have the same mass. This means that the orange and apple must also have the same mass.
6. Various answers, for example: A. duck B. teddy; A. duck B. robot