

Compare Lengths and Heights

Use the cards to make the statement correct.

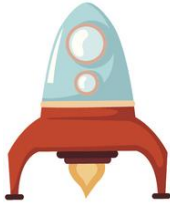
is taller than

which is shorter than

A.



B.



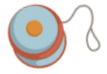
C.



D.



E.



Explore three different possibilities.

is taller than

which is shorter than

is taller than

which is shorter than

is taller than

which is shorter than

Compare Lengths and Heights

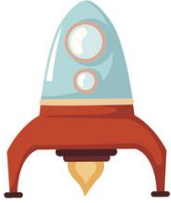
Use the cards to make the statement correct.

is taller than which is shorter than

A.



B.



C.



D.



E.



Explore three different possibilities.

Various answers, for example:

B is taller than C which is shorter than D

C is taller than E which is shorter than A

A is taller than C which is shorter than B